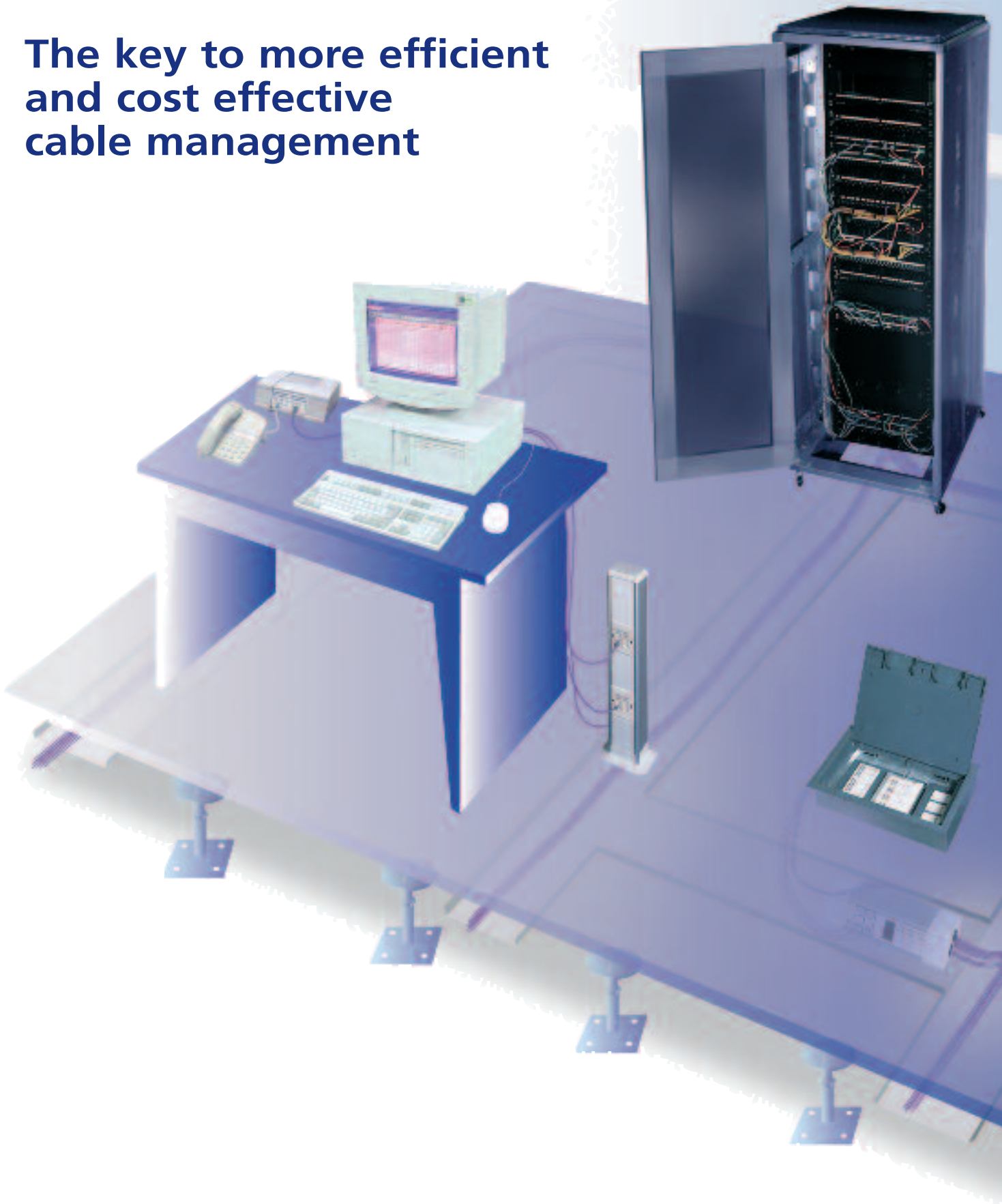


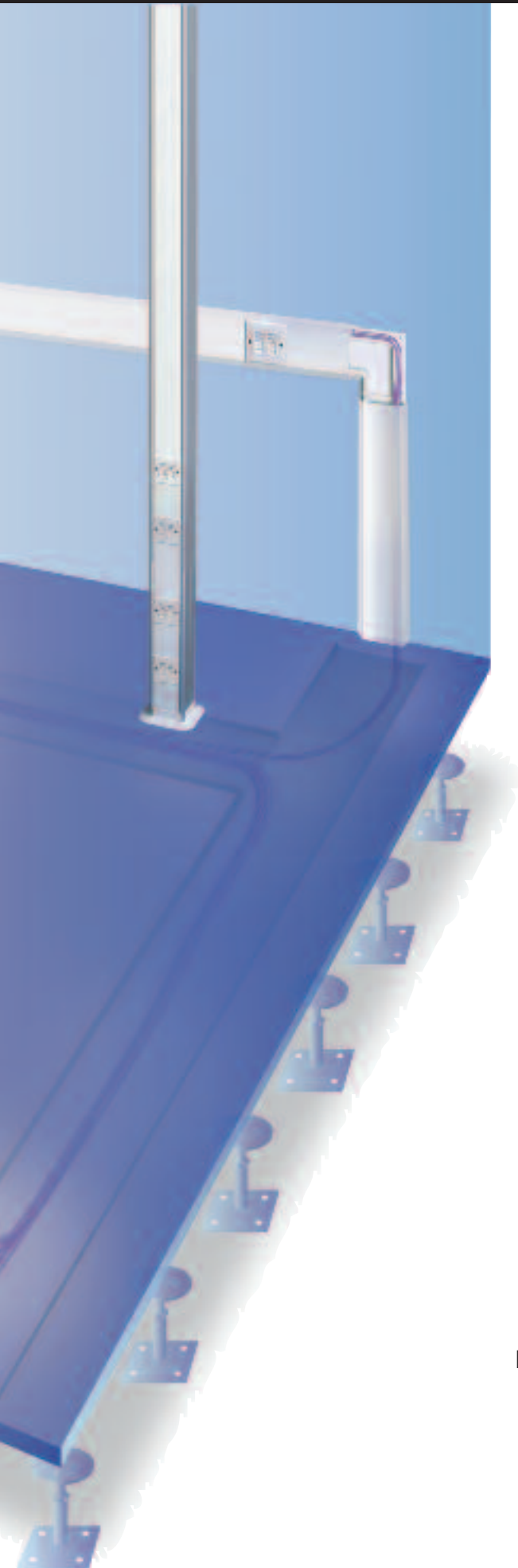


Structured Cabling Products

HellermannTyton Cable Distribution Products

# The key to more efficient and cost effective cable management





<b>Patch Panels &amp; Outlets</b>	
Patch Panel Range	4-5
Data Outlets Range	6-7
Outlet Mounting Hardware	8
Security Outlets	9
<b>CombiLAN-Jnr.</b>	
Wall Cabinet	9
<b>Racking Accessories</b>	
Cable Management Hardware	10
Rack Snap	10
Front / Rear Cable Managers	11
Telco Panels & Alpha Test	11
<b>Floor &amp; Ceiling Cable Distribution</b>	
Multi-function Boxes	12
Power & Data Floor Boxes	12
Power Poles & Power Pods	13
Sub Floor Box / Desk Units	13
<b>Cable Management &amp; Identification</b>	
Helawrap	14
Velcro Hook & Loop Ties	14
Flexoduct	14
TIPTAG	15
Identification Cable Ties & Arrow Tags	15
RiteOn Label Dispenser	15

## GigaBand & GigaBand HD

GigaBand and GigaBand HD (high density) patch panels exceed the Category 6 Class E performance standard.

Both panels are ideally suited to run protocols such as 1000Base TX, Gigabit Ethernet, and 622 ATM, and are backward compatible with Cat 5E and 5 systems.

The PCB's used within these panels are also interchangeable with either GigaBand or GigaBand Triple (high density) wall outlets and both panels include our unique aluminium snap-on rear cable manager plus a set of Rack-Snap rack inserts as standard.

### Features:

- UTP and FTP versions
- Exceeds Category 6 performance standard
- Backward compatible to Cat 5E and 5
- 568A or 568B wiring options
- PCB's interchangeable with GigaBand or GigaBand HD Triple outlets
- Available in 1U, 16 port to 6U, 96 port
- Includes rear cable management
- Includes Rack-Snap inserts
- Slide label system + software available
- Panel colour options
- Customised product facia available
- Can be supplied totally or partially loaded

## Megaband Category 5E

MegaBand patch panels have been specifically designed to offer exceptional performance and value for money.

Attractive and robust, these panels exceed the performance standards specified by the category 5 Enhanced Class D standard.

Standard configurations include 1U, 24 port and 2U, 48 port formats, however, custom configurations can also be manufactured if required.

### Features:

- Exceeds Category 5E Class D standard
- Only high quality components used
- Backward compatible with Category 5 and voice applications
- Rack-Snaps included
- Sliding label system with stick-on plastic label cover included
- Port label numbers printed on panel facia
- Custom screening of logos etc. also available if required
- Coloured IDC labelling at rear of panel
- Rear cable management also available



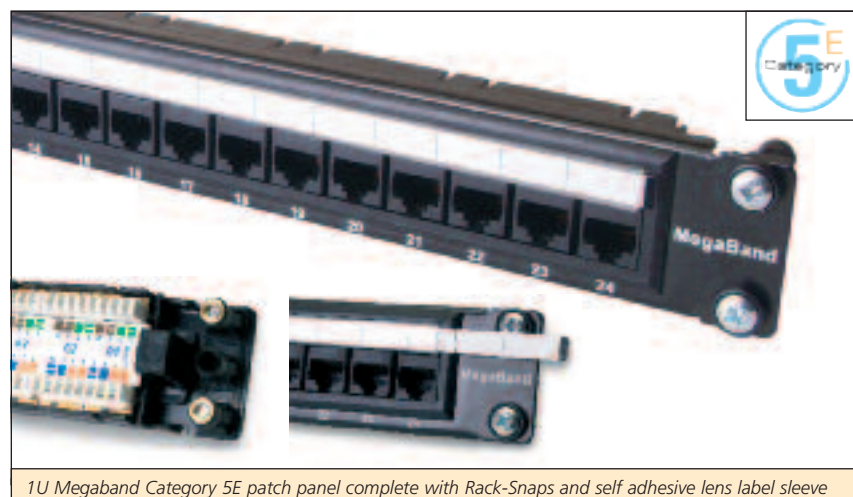
*New GigaBand HD (24 ports per U) featuring Rack-Snaps and aluminium rear cable manager*

### New GigaBand Patch Panels

Product Code	Description
UTP	
1/1608IDC-NGB CM	1U 16 port UTP GB
2/2408IDC-NGB CM	2U 24 port UTP GB
2/3208IDC-NGB CM	2U 32 port UTP GB
3/4808IDC-NGB CM	3U 48 port UTP GB
FTP	
1/1608IDC SLD-NGB CM	1U 16 port FTP NGB
2/2408IDC SLD-NGB CM	2U 24 port FTP NGB
2/3208IDC SLD-NGB CM	2U 32 port FTP NGB
3/4808IDC SLD-NGB CM	3U 48 port FTP NGB
Options	
PC08KB - NGB	Cat 6 add in PCB - UTP
PC08IDC SLD-NGB	Cat 6 add in PCB - FTP

### New GigaBand HD Patch Panels

Product Code	Description
UTP	
1/2408IDC HD-NGB CM	1U 24 port IDC NGB
2/4808IDC HD-NGB CM	2U 48 port IDC NGB
Options	
PC08IDC HD-NGB	Cat 6 add in PCB



*1U Megaband Category 5E patch panel complete with Rack-Snaps and self adhesive lens label sleeve*

### Megaband Cat 5E Patch Panels

Product Code	Description
1/2408-NMB-HD/BK	1U 24 port (2 x 12) with silk screen + label
2/4808-NMB-HD/BK	2U 48 port (4 x 12) with silk screen + label
CM2000 MB	Optional rear cable manager

## Global 6 High Density Panels

The Global 6 range of patch panels offer exceptional Category 6 performance within a high density format. Each patch panel is a modular unit, presenting 24 ports per 1U, with the 6 PCB's each offering 4 RJ45 ports.

\*A unique 4 or 8 way interchangeable fibre snap-in unit is also available for use with this product. This enables the panel to present a mixed media of fibre and copper together within the same chassis.

\*See office for details

### Features:

- High density panel (24 ports per 1U)
- Magnifying ID label covers top & bottom
- 568A or 568B wiring options
- Customised product facia available
- Can be supplied totally or partially loaded
- Exceeds all ISO/IEC JTC 1/SC 25/WG3 performance standards for Category 6
- Backward compatible with Cat 5E and 5
- Custom panel colours optional extra
- Snap-on aluminium, sliding rear cable management also available
- Push-on label system (software available)
- Available in 1U-24 port to 4U-96 port configurations
- Accepts Krone and 110 punch down tools

## ECO UTP, FTP & Voice Panels

The ECOPATCH range of right angled patch panels offer Category 5E performance in an economical high density UTP or FTP format.

Both the UTP and shielded panels feature a right angled chassis, with the PCB's mounted horizontally. The shielded panel also features built-in cable management, with all cables tied directly to the metal chassis using the unique metalised grounding clips.

### Features:

- Cost effective solution
- ISO/IEC 11801:95 / 568A-5 Compliant
- UTP FTP/STP patch panels
- Built in rear cable management
- Unique metalised grounding clip
- High density (24 ports) in 1U
- Panel colour options

Product Code	Description
RWD2408PB55EM	1U FTP 24 Port IDC
RWD2408PBU5EM	1U UTP 24 Port IDC
1/5008V IDC	1U 50 Port RJ45 Voice Panel



19" Global 6 High Density 1U patch panel. Features magnifying label lens covers top and bottom.

### Global 6 HD Patch Panels

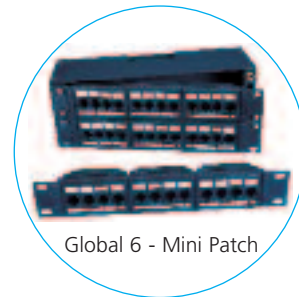
Product Code	Description
1/1208IDC G6	1U 12 Port + 12 Port Expansion
1/1608IDC G6	1U 16 Port + 8 Port Expansion
1/2408IDC G6	1U 24 Port Fully Loaded Panel
2/3208IDC G6	2U 32 Port+16 Port Expansion
2/4808IDC G6	2U 48 Port Fully Loaded Panel

Accessories	
PCB0408IDC G6	4 Position Add in PCB Module
CM2000-G6	Rear Cable Management
1/GF24UC	1U Unloaded Chassis
2/GF48UC	2U Unloaded Chassis
GFBP	4 Position Blank Plate

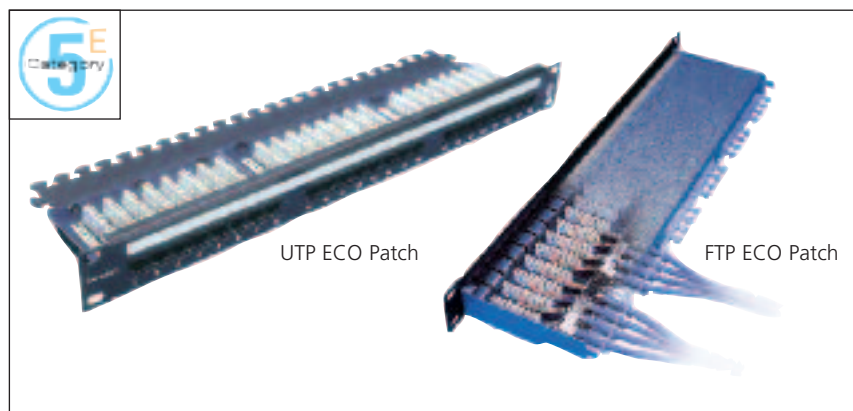
### Global 6 Mini-Patch Panels

Product Codes	Description
Mini-Patch Panels	
NMP1208IDC G6	*1U 12 Port Mini-Patch Panel
NMP2408IDC G6	*2U 24 Port Mini-Patch Panel

\* Includes mini wall bracket



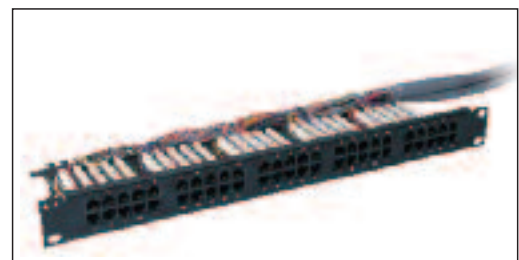
Global 6 - Mini Patch



ECO UTP & FTP Panels featuring built in rear cable management

### ECO Voice Panel (50 Way, 1U)

The ECO 'Voice' panel is the most economical way to offer 25 & 50 pair cables in an RJ45 presentation. Available as a 1U 50 port right angled panel accepting 1, 2 or 3 pairs per RJ45 circuit.



ECO Voice patch panel (50 Way, 1U)

### GigaBand and GigaBand HD (Triple) Outlets

GigaBand outlets offer exceptional Category 6 performance, and are available in either a standard (16 ports per 'U') or high density (24 ports per 'U') format. Both panel ranges are also backward compatible with Category 5E and Category 5 products and systems.

The GigaBand HD (high density) outlets present three individual modules within a standard single or double facia.

**Features:**

- Fully modular, individual PCB's
- Exceeds ISO/IEC/TIA Category 6 Class E performance standard
- Backward compatible to Cat 5E and 5
- Triple outlet features 3 shuttered modular RJ45 outlets in a single gang facia
- 568A or 568B wiring options
- Patented slide label system
- Rear cable tie point
- Plastic colour options

**GigaBand Outlets**

Product Code	Description
AS08IDC NGB	RJ45- IDC GigaBand Module UTP
AS08IDC NGB SLD	RJ45- IDC GigaBand Module FTP

**GigaBand HD Triple Outlets**

ASFP3-308IDC NGB	Loaded RJ45 Triple Outlet
------------------	---------------------------



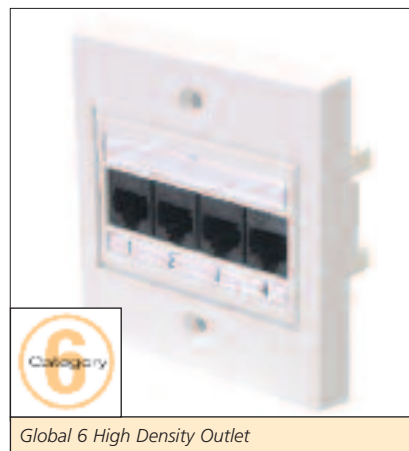
*New GigaBand and New GigaBand HD (Triple) Outlet Modules and faceplates*

### Global 6 High Density Outlets

Global 6 outlets offer exceptional Cat 6 performance in a low cost, high density format, and are interchangeable with all Global 6 UTP or Fibre patch panels. They are also designed to be backward compatible with Category 5E and 5 systems.

**Features:**

- Fully modular 4port PCB's are interchangeable with Global 6 panels
- Category 6 Class E standard compliant
- Backward compatible with Cat 5E & 5
- Available in several mounting options
- Rear cable tie point
- Plastic colour options
- 568A or 568B wiring options



*Global 6 High Density Outlet*

Product Code	Description
0408IDC G6	Complete Global Outlet including face plate

### 6c Style Outlets

Our 6c telecommunications outlets offer Category 6 performance, are backward compatible with Category 5E and 5 and systems, and fit industry standard 6c fixing dimensions.



**Features:**

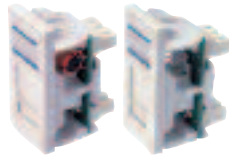
- Fully modular PCB's
- Category 6 standard compliant
- Backward compatible with Cat 5E and 5
- 568A or 568B wiring options
- Rear cable tie point
- Plastic colour options
- Available in several mounting options
- Bracket for Alpha Snap fascias available
- Voice LJU options
- Size 23.5mm x 37.5mm

### Alpha Snap Non Category 5/5E Outlets

The Alpha Snap range includes a number of non Category 5 or 5E modules such as Voice, ISDN and Data Modules.

**Features:**

- Fully modular PCB's
- Slide label system
- Plastic colour options



Voice Master & Secondary Modules

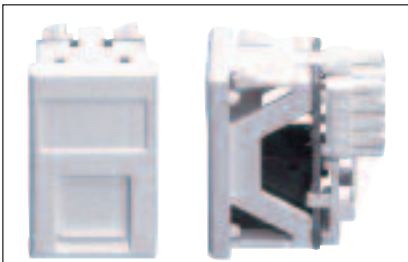


MMJ Module



Jack to Jack Module

Product Code	Description
Voice & Data:	
AS08KB ISDN	RJ45-Krone IDC ISDN (C 5)
ASVSKB	LJU-Voice Secondary
ASVXKB	LJU-Voice PABX Master
ASVMKB	LJU-Voice Full Master
AS06KB-RJ11	RJ11-Krone IDC
AS06KB-MMJ	MMJ-DEC Krone IDC
AS08JJ (C5 Only)	RJ45-RJ45 Jack-Jack
AS08JJSLD (C5 Only)	RJ45-RJ45 Shield Jack-Jack
COAX & Fibre	
ASBNCU	BNC Single
ASTV	Euro Television Coax (Shuttered)
ASFTV	F Type Sat Com TV
ASSTU	Angled Simplex ST Fibre
ASSTU2	Low Profile Twin ST Fibre
ASSCU	Low Profile Duplex SC Fibre



6c Style Outlets

Product Code	Description
6C08IDC NGB	6c Style Module RJ45 C6
6C08IDC C5E	6c Style Module RJ45 C5E
6CVSIDC	6c Style LJU Secondary
6CVXIDC	6c Style LJU PABX



Angled 6c Module

### NEW 6c Low Profile Module

**Features:**

- 45° angle
- Minimal depth in front of module

Product Code	Description
6C-ANG-CSE/WH	Angled 6c Module Cat 5e

### Megaband Category 5E Outlets

MegaBand outlets offer unbeatable performance and value, as they exceed the Category 5E performance standard, making them the ideal choice for high speed LANs running the latest protocols such as Gigabit Ethernet etc.

They easily snap into their 2 way or 4 way outlet face plates, providing an attractive high density, low profile solution.

**Features:**

- Category 5E compliant
- Low profile design
- Backward compatible to Cat 5
- Slide label system
- Rear cable tie



Megaband Low Profile UTP Outlet Module

Product Code	Description
MB08IDC C5E	MegaBand Category 5E Outlet Module

### Window Sill Outlets

These Category 5E Window Sill outlets are easily mounted under a desk or in confined spaces, and are available with single and dual RJ45 ports, in both UTP and STP.

**Features:**

- F/STP and UTP Category 5E options
- Category 5 & 5E standard compliant
- Patented label system
- 568A and 568B wiring options
- Dual cable entry points
- Moulded ABS
- Labelling software available
- Tamper proof screw (option)



Window Sill Outlets offer greater flexibility

Product Code	Description
WSB-01	Single Surface Mount Box
WSB-02	Dual Surface Mount Box
PC08KB-DSP C5E	UTP Module
PC08KB-DCS C5E	Full DCS Shielded Module

### Switchable Voice Adaptors

These adaptors convert the RJ45 interface to that of the terminal or computer. D-Sub adaptors are available as either configured or unconfigured for custom applications.

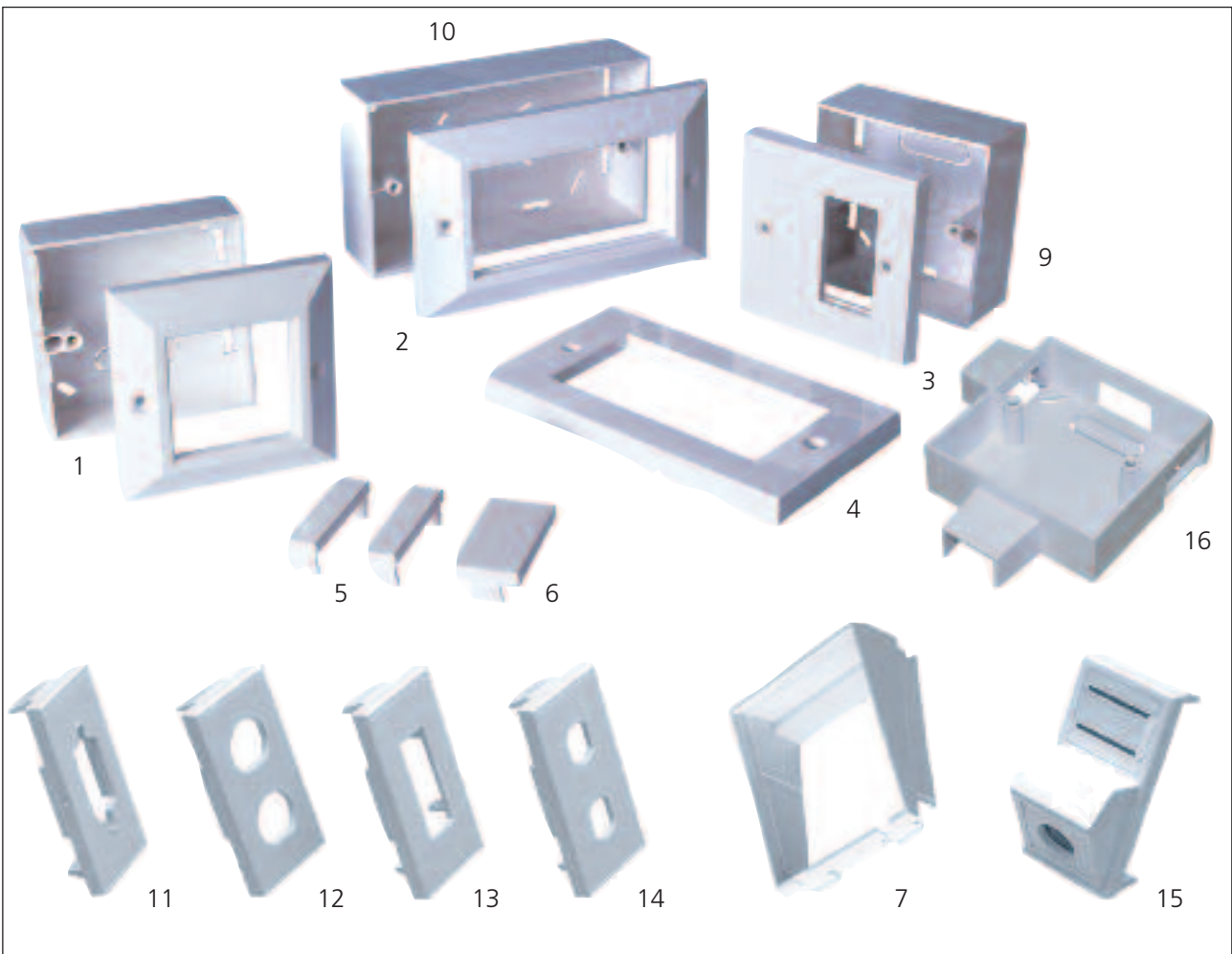
**Features:**

- Switchable from Master to Secondary
- Common interface support
- External to cable system

Product Code	Description
RW VSBM	RJ45 - Voice secondary
RW VXBM	RJ45 - Voice PABX
RW VMBM	RJ45 - Voice master
RW VXBM ISDN	RJ45 - ISDN adaptor



Voice Adaptor options available



Additional hardware options are available - contact us for further information

### Outlet Mounting Hardware

HellermannTyton manufacture a comprehensive range of modular UK, European and international plastic products from ABS plastic.

All are available in a wide variety of sizes and are suitable for most countries. Contact our sales department for further information on the products available.

#### Features:

- All popular sizes supported
- Modular design
- Quick and easy installation
- Accept all Alpha Snap products

#### Product Code

- 1) ASFP01
- 2) ASFP02
- 3) ASFP01F  
(or) MBFP01F
- 4) ASFP02F  
(or) MBFP02F
- 5) AS025
- 6) AS050
- 7) ASANG
- 8) ASBB01-27MM
- 9) ASBB01-37MM
- 10) ASBB02-37MM
- 11) ASD9U
- 12) ASCX2U
- 13) ASSCU
- 14) ASSTU2
- 15) ASSTU

#### Description

- Single Gang Facia (2x Module)  
 Double Gang Facia (4x Module)  
 Alpha Snap Single Gang Facia Low Profile  
 Megaband Single Gang Facia Low Profile  
 Double Gang Facia Low Profile  
 Megaband Double Gang Facia Low Profile  
 Quarter Blank (Half Module)  
 Half Blank (Full Module)  
 35° Angled Insert (2x Module)  
 Single Gang Back Box 27mm  
 Single Gang Back Box 37mm  
 Double Gang Back Box 37mm  
 9 Way D Sub  
 Twin Coax  
 Duplex SC  
 Duplex ST  
 Single Angled ST Module

#### Trunking Back Box + Adaptors

- 16) ASBB01-T-27 27mm Trunking Back Box
- ASBBT-16 16mm Trunking Adaptor
- ASBBT-25 25mm Trunking Adaptor

#### Metal Mounting Hardware

- ASFP01M Single Gang Metal Facia available in white or brushed steel
- ASFP02M Double Gang Metal Facia (White)
- Floor Plates # 2 or 4 Hole Standard



## Inter-Lock Outlet

Inter-Lock provides a quick and effective method of controlling network access. Easily fitted, Inter-Lock fits standard HellermannTyton single or double gang face plates and is operational within minutes.

A simple turn of the key activates LAN or telephone line access.

### Features:

- RJ45 and LJU versions
- Key cannot be removed in the 'on' position
- Category 5 and 5E standard compliant
- 568A or 568B wiring options\*
- ATM, Ethernet and Fast Ethernet\* and other protocols available
- Tamper-proof screw (+ screwdriver) option
- Two keys supplied with each outlet - sixty different key types available



*Inter-Lock provides instant on-off security*

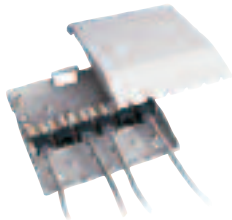
Product Code	Description
ASO8KBC5E-LOC	Single Gang Data Outlet
ASVSKB-LOC	Single Gang Secondary
ASVXKB-LOC	Single Gang PABX
ASVMKB-LOC	Single Mastered
LLTPS1	Tamper-proof Screw
LLRT	Removal tool for Tamper-proof screw

\* Applicable to RJ45 version only

## LAN-Lock

Available in 3 or 6 way sizes, LAN-Lock's two part, low profile casing is moulded from sturdy ABS and accepts normal patch cords.

These units can be easily mounted onto most surfaces and utilise HellermannTyton's 16 and 25mm standard trunking adaptors, incorporating rear cable entry and internal fly lead anchor points. The 3 way version has fixings suitable for standard back boxes.



### Features:

- Fully modular - individual PCB's
- ISO/IEC 11801:95 TIA 568-A Compliant (C5) and TIA 568-A-5 (C5E)
- Incorporates rear cable entry and internal fly lead fixing points
- 568A or 568B wiring options
- Slide label system (option)
- Tamper-proof screw (option)
- Ideal for EPOS or school applications



*LAN-Lock is available in a variety of configurations*

Product Code	Description
LL03U	3 Port Unloaded Basic Unit
LL03UM	3 Port Unloaded Unit with Slide Label
LL06U	6 Port Unloaded Basic Unit
LL06UM	6 Port Unloaded unit with Slide Label
LLPC08C5E	Add in Module C5E
Accessories:	
LLTPS1	Tamper Proof Screw (Pair)
LLRT	Removal Tool for LLTPS1
LLTA16	Trunking Adaptor 16mm
LLTA25	Trunking Adaptor 25mm
LLST6	6 Port Fibre Coupler Chassis

## CombiLAN-Jnr. Wall Cabinet

CombiLAN-Jnr. presents a wide range of patch panel and outlet combinations, including active hardware, within a secure, wall mountable cabinet. Internal power and external ISDN sockets are also available as standard options.

Cabinet Exterior Dimensions: Height 313mm, Width 355mm, Depth 220mm.



*CombiLAN-Jnr. (active equipment not included)*

### Features:

- ISDN outlets mounted on one side
- Two power units mounted internally
- Complete with 18 port patch panel
- Power lead extension socket
- Lockable perspex front door
- Extended 1.5 U shelf options
- Available in Brown & Beige, or Black
- Height 313mm, Width 355mm  
Depth 220mm

Product Code	Description
NMPCAB/CL Jnr	7U Wall mounted cabinet complete with fixed 18 port patch panel.
NMP2x13amp	2U enclosed power unit, two standard 13 amp sockets plugged in externally by an EC socket presentation.
NMP EXS	1.5U extension shelf

### Cable Management

HellermannTyton offers a wide range of cable management accessories.

Made from steel and plastic, the product range includes: vertical and horizontal cable rings, 2-9 U hinged wall brackets, blanking plates, brush 'letter box' panels etc.

Rear cable management organises the cables feeding the rear of the patch panels. Cable management trays reduce the stress on the conductors at the termination point to an absolute minimum, and are designed to accept either clips or cable ties.

Clear perspex label strip holders are also available for attachment to some of the rear cable managers.

**Features:**

- Quality construction
- Variety of cable fixing options
- Left hand only and right hand only feeds
- Black and beige colour options
- Standard 19" construction
- Plastic or metal rings (cable tidies only)
- Various depth options



A selection from the wide range of steel cable management products available

Product Code	Description
1CTV	1U 4 Vertical Rings 62mm
1CTV-P	1U 5 Plastic Vertical Rings 75mm
1CTV-H	1U 3 Vertical 2 Horizontal Rings 70mm
1CTV-LP	1U 4 Vertical Rings Low Profile 32mm
1CTLB-BR	1U Brush 'Letter Box' Panel
1CTV-FB	1U Finger Bar Management
2CTV	2U 4 Vertical Rings
2CTV-FB	2U Finger Bar Management
PP078	1U Plastic Clip in Ring
PP101	2U Plastic Clip in Ring

BK = Black      BG = Beige (Add code as required)

### Rack Snap

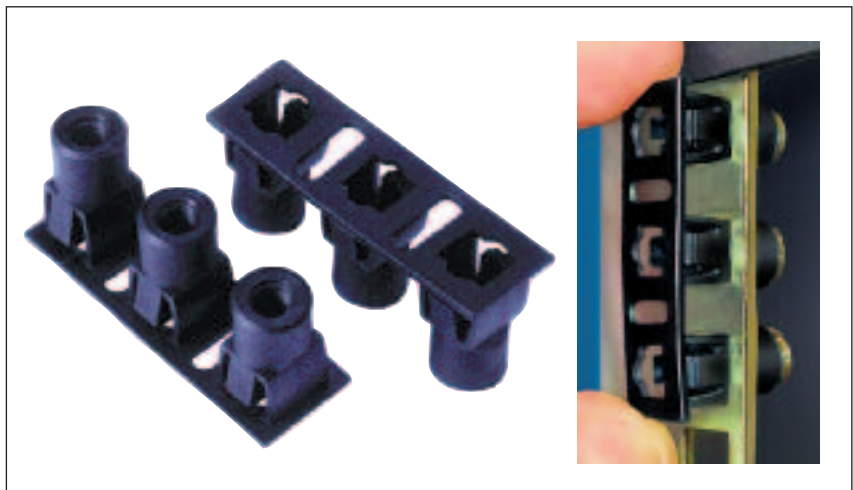
Stylish 'Rack Snap' is a revolutionary patch panel fixing which drastically reduces the time taken to install patch panels into a cabinet.

Rack Snap inserts into any existing square rack-mount position - then the panels are affixed with M5 screws.

*HellermannTyton can also supply Rack Snaps pre-mounted onto patch panels.*

**Features:**

- Significantly quicker than cage nuts
- Can be separated for individual fixings
- Toolless installation & reusable
- Snap in patch panels
- M5 fixings
- Suitable for rack thicknesses between 1.2mm & 2.4mm
- Patent pending



Rack Snaps are available in blocks of three (standard size suitable for a 1U panel).

Product Code	Description
RS100	Full kit 100 x 3 way Rack-Snap, 300 cup washers, 300 x 5mm screws
RS101	Bag of 100 x 3 Rack-Snap only
RS102	Bag of 300 x 5mm screws & 300 cup washers for Rack-Snaps
RS002	Small Rack-Snap kit 2 x 3 way Rack-Snap, 6 x cup washers, 6 x 5mm screws

## Telco 10/100 Base T Patch Panels

These Alpha Patch Ethernet Telco patch panels convert feeder or equipment cables from 25 pair to 12 individual RJ45 ports, with 2 pair presentation suitable for LAN applications such as 10 Base T and 100 Base T.

Four pair 258A panels are also available.

### Features:

- Available in 1U & 2U versions
- 4 pair 258A, 2 pair Ethernet
- Slide label system
- Through shield continuity on FTP panel
- Bail lock security on shielded panel



Front and Rear of 2U 48 port 100 Base T Telco Panel pictured above. 10 Base T Panel shown left.

Product Code	Description
2/2404 2x50 FTX	2U (24 port) 2 x 50 Femal Telco 100 Base T panel
2/4804 4x50 FTX	2U (48 port) 4 x 50 Femal Telco 100 Base T panel
1/2404 2x50 FT	1U (24 port) 2 x 50 Femal Telco 10 Base T panel
2/4804 4x50 FT	2U (48 port) 4 x 50 Femal Telco 10 Base T panel
2/24042x50 FTPF	2U (24 port) 2x50 Femal Telco 10 Base T FTP panel

## Alpha Test - Patch Cable Tester

The Alpha Test product allows users to verify the status of a patch cable by displaying the condition of the cable and indicating: if the cable is wired straight, 10base T cross over, custom wired or faulty, and also tests for shielded patch cables.

Built into a 1U panel, the tester can be permanently mounted within a cabinet.

Alpha Test can also be programmed to learn special configurations for specific applications which is indicated as a custom cable.

### Features:

- Battery or Mains adaptor (supplied)
- Fast and slow scan speeds
- 19", Minicab and Desk mount versions
- Custom cable configurable
- 8 Bit Micro Processor controlled
- UTP and FTP cable testing
- Automatically identifies 10base T crossover cables



Alpha Test is designed to be installed directly into a 19" rack or mini cabinet

Product Code	Description
VP Test	1U Electronic Patch Cord Tester
VP Test Min	1U Mini Size Tester
RJ45-RJ45L UTP RJ45	Tester Launch Leads (Pair)
RJ45-RJ45C	UTP RJ45 Through Coupler (Pair)
RJ45-RJ45LSLD	STP RJ45 Tester Launch Leads (Pair)
RJ45-RJ45CSLD	STP RJ45 Through Coupler (Pair)
VSBM - P	RJ45 - LJU Launch, Leads (Pair)



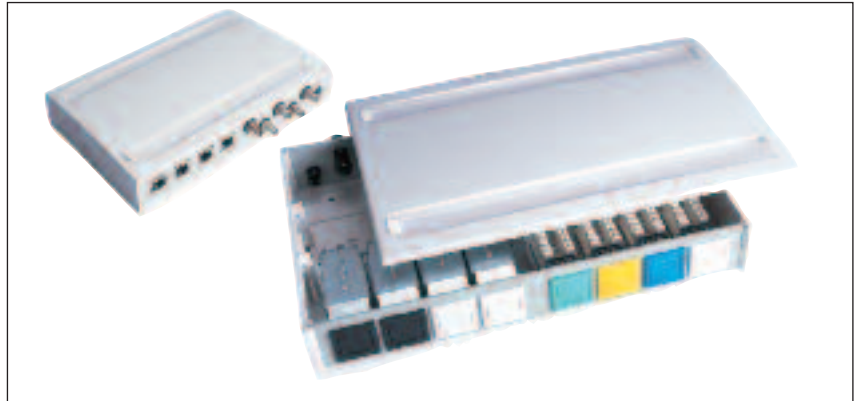
### Multi Function Boxes

Suitable for desk outlet presentation or as an underfloor box, this product supports a wide selection of media including: STP RJ45, UTP RJ45, voice outlets, ST and SC Fibre connectors, Telco connectors and more.

The unit also features front and rear metal plates, available in a variety of configurations, to enable the user to design custom solutions for special applications.

**Features:**

- ST and SC Fibre options
- F/STP and UTP Category 5/6 options
- Patented slide label system - labelling software available
- Internal fibre cable management
- 20 and 25mm gland plates supplied
- Colour coded plastic shutter options
- Made from moulded ABS plastic
- Can also be manufactured in steel, contact sales office for options available



A variety of Copper and Fibre media can be combined in one unit

Product Code	Description
MF08 AS U	M/F Box to accept 8 Alpha Snaps
MF08 LS U	M/F Box to accept 8 DSP or DCS
MF08 LSS U	M/F Box as above but Shuttered
MF16 LS U	M/F Box to accept 16 DSP or DCS
MF16 LSS U	M/F Box as above but Shuttered
MF08 ST U	M/F Box to accept 8 ST connectors
MF12 ST U	M/F Box to accept 12 ST connectors
MF08 LS/ST U	M/F Box to accept 4 ST and 4 DSP
PC08KB DSP	DSP UTP Module
PC08KB DCS	Full DCS Shielded Module
ST SIC	ST Snap in Coupler
MF GRID	DCS earthing grid
ASXXKBXX	Alpha Snap as required

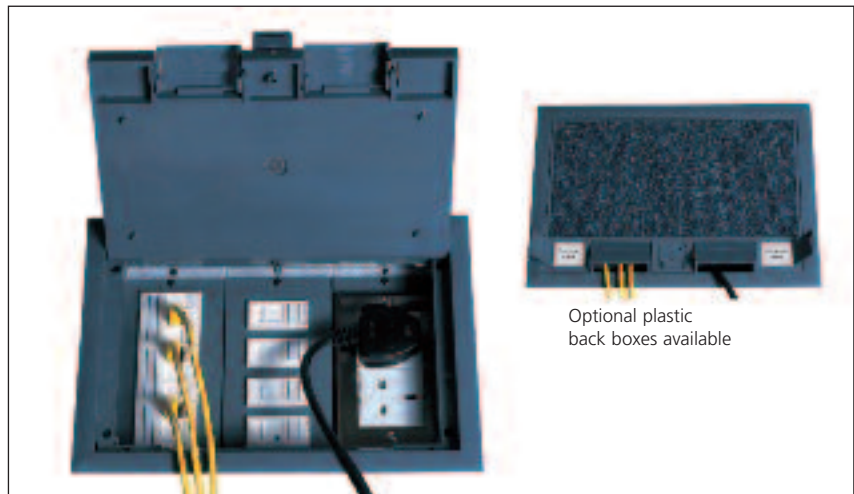
### Power & Data Floor Boxes

Constructed from a combination of metal and high strength plastic this versatile high density (in-tile) floor box allows many different power and data outlet combinations.

Each unit features a unique set of 4 self locking fixing clamps which adjust upwards to secure the floor box against the floor tile.

**Features:**

- Large capacity, 3 compartment box, accepting up to 27 outlets in one unit
- Fast, trouble free installation, complete with secure clamping system
- Exterior labelling positions
- Integral flip up lifting handle
- Standard and customised plate options
- 3 segregated cavities accommodate data and power outlets inside a single unit
- Removable lid facilitates clear access
- Dual size knockouts accept standard 20mm and 25mm cable sleeving gland
- Tamper-proof locking mechanism



Optional plastic back boxes available

A wide variety of data and power options can be configured within each unit

Product Code	Description
ASFB3/3 COMP	Fully Loaded 3 Compartment Back Boxes only
Floor plates for above to accommodate :	
ASFBP00	Blank Plate
ASFBP01	1 x Double gang face plate
ASFBP04	4 x Alpha Snap outlets
ASFBP06	2 x Triple outlets (6 RJ45's)
ASFBP06/9	6 x Alpha Snap outlets or
ASXXXXX	3 x Triple Outlets



### Power Poles & Power Pods

Stylish and easy to use, these Power Poles are designed to enable cables to be fed from both the floor and ceiling.

The exterior facia accepts 50 x 25mm Alpha Snap modules and offers an optional easy-fit latch size for installing power sockets.

Each unit can be securely bolted to the floor and ceiling using a mounting bracket, or in the case of a Power Pod, secured to the floor only. Plastic collars are also provided to cover any holes cut in the ceiling tiles.

**Features:**

- 300mm, 500mm, 1m and 3.6m standard lengths
- Data and Power cables separated
- Removable top plate
- Clip on back boxes
- Constructed using lightweight aluminium extrusion
- Extruded front and rear fascia
- Anodised finish
- Available up to 4.5m high
- Power and Data ports available
- Accepts any STD 86x86 face plate



Available in standard lengths or custom sizes up to 4.5 metres

**Product Code Description**

Standard Size Power Pole (Floor Mounted)

PPF300	300mm High Power Pole
PPF500	500mm High Power Pole
PPF1000	1000 mm High Power Pole

Floor to Ceiling Power Pole

PPC3600	3.6 Metre High Power Pole
---------	---------------------------

Custom Specials

PPF****	1 Metre Plus (floor mount)
PPC****	3.6 Metre Plus (floor to ceiling)
PPC****	Less than 3.6 Metres

Options

PPBC	Back Clip (back box)
PPS	Cable Separator (pair) per metre

Face Plates

ASFP01-FM	Flush Mount Face Plate accepts Alpha Snap or Triple Module
ASP01-FM	Single Flush Mount Power Socket

### Sub Floor Box / Desk Units

These stylish units are the ideal solution for presenting data, power or both together, at floor level or on the desktop.

Their attractive design is ideally suited to desktop applications, while their robust, extruded aluminium construction, more than meets the requirements of underfloor applications. Screw fit tabs located at the base of these units enable them to be affixed securely to either floor or desktop.

**Features:**

- Extruded aluminium with anodised finish and ABS plastic end caps
- Sub Floor Box accommodates 8 Alpha Snap (2x4) or 12 Triple (2x6) outlets, up to 16 Alpha Snap (2x8) or 24 Triple (2x12) outlets
- Interior cable management
- Custom sizes available



In addition to the standard sizes, custom solutions can also be accommodated

Product Code	Description
	Sub Floor Box / Desk Unit:
AS08/12ESFB	8 AS or 12 AS/HD Outlets
AS16/24ESFB	16 AS or 24 AS/HD Outlets



## Helawrap

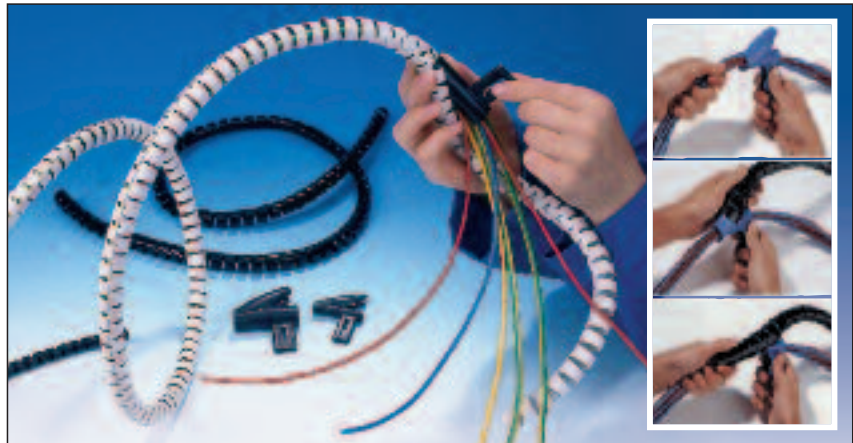
HW, HW VO, HW PP

Helawrap is manufactured from highly flexible, halogen free Nylon 6.

The design of the product allows easy access to the cable at any point, whilst the accompanying applicator tool ensures quick and easy installation. Due to its innovative design, build costs can be significantly reduced.

### Features:

- Ideal for wrapping and covering wires, cables or hoses.
- Easily removed and reapplied
- 20 metre pack with applicator tool included
- Office Grey option for HW, available in 2.5 metres lengths.



Using the unique tool supplied, Helawrap is easy to apply over cables on site

Product Code	Description	Spare Tools
HWPP7	7mm Helawrap Black 25m	HWT7
HWPP16	16mm Helawrap Black 25m	HWT16
HWPP20	20mm Helawrap Black 25m	HWT20
HWPP25	25mm Helawrap Black 25m	HWT25
HWPP32	32mm Helawrap Black 25m	HWT32

## Velcro Hook & Loop Ties

Ideal for use with computers and other information processing equipment, for securing Electrical, Data, or Optical Fibre cables.

### Features:

- Back to back fastening straps
- Provide maximum protection to thin walled or soft insulation cabling
- Easy to release and re-use
- Available in Black hook with Red, Light Grey or Black loop



Available in 120mm, 200mm or 300mm lengths (12mm width)

Product Code	Description
VT120	120 x 12mm - Red, Grey, Black
VT200	200 x 12mm - Red, Grey, Black
VT300	300 x 12mm - Red, Grey, Black

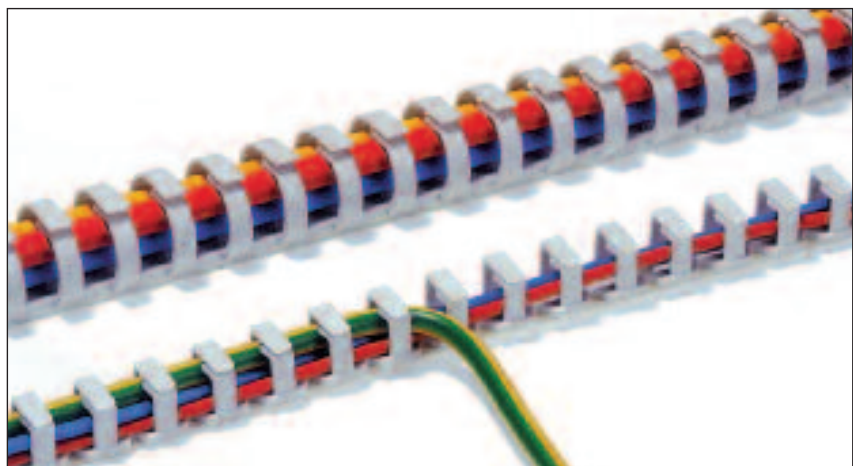
## Flexoduct

### Flexible Supports for Cables and Wires

These supports for bundles, cables and wires, provide a simple reliable and economical wiring system, which can be installed quickly. These supports are available in four standard sizes in lengths of 500mm and are particularly suitable for supporting and securing cables in structured cabling installations.

### Features:

- Made from grey polypropylene (self extinguishing UL94V-2)
- Good chemical resistance
- Operating Temperature range -20°C to +70°C
- Rectangular and circular sections
- Supplied with adhesive fixing strip. Also pre-drilled for additional screw fixing as required



Available in a variety of sizes to suit different cable thicknesses

White Code	Grey Code	Description
T10W	T10	9 x 11mm rectangular rings
T20W	T20	20mm diameter rings
T30W	T30	30mm diameter rings
T40W	T40	40mm diameter rings

## Printable Marking Tags TIPTAG

Printable tags “from the roll” can be printed using the TT1000, TT2000 and TT3000 thermal transfer printers. TIPTAG is presented in a special perforated format, which includes holes for fastening.

They are supplied in fixed lengths and are available in four widths. The standard TIPTAG lengths are 65mm and 100mm. The TIPTAG is used in conjunction with cable ties. They are especially suited to marking larger cable diameters or cable bundles. Special lengths and colours are available. Details of lengths and colours available on request.



TIPTAG printed using Thermal Transfer Printers

Product Code	Description
TIPTAG11	11.0mm Size, Roll Length 12.5 Metres
TIPTAG15	15.0mm Size, Roll Length 12.5 Metres
TIPTAG25	25.0mm Size, Roll Length 12.5 Metres
TIPTAG40	40.0mm Size, Roll Length 12.5 Metres

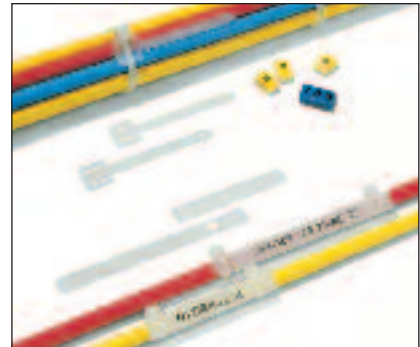
## Identification Cable Ties & Arrow Tags

This range of identification cable ties are ideally suited for simple marking of cable bundles.

On site marking can still be quickly achieved using standard marking pens. Alternatively, a wide range of pre-printed labels can be used. With Arrow Tag marks can be made up using standard HO50HO85 Ovalgrip cable markers.



Preprinted & Marker Identification Labels



Marker printed Arrow Tags

### Features:

- Wide range of sizes
- Choice of Natural and Black
- Suitable for general panel building and refurbishment work.

### Identification Cable Ties

Product Code	Description
IT18R	100 x 2.3mm
IT18FL	110 x 2.3mm
IT50R	210 x 4.6mm

### Arrow Tags

Product Code	Description
AT1	62 x 4.6mm
AT2	63 x 9.0mm
AT3	100 x 9.0mm
ITI	Idn Tag 44 x 19mm
CB/CTL	Marker Pen

## RiteOn Label Dispenser Self Laminating Labels

The RiteOn label dispenser is ideal for the production of simple cable markers, on site repair operations, temporary marking or prototyping.

The refillable dispenser is designed to aid the user to produce hand written inscriptions neatly and quickly anywhere.

Using a marker pen (supplied in the starter pack) the desired inscription is written onto the white portion of the label displayed in the window.



The starter pack contains everything you need for on site cable marking

### Features

- Ideal for on-site marking
- Suitable for use with permanent markers
- A full range of accessories are available

Product Code	Description
R0101	19 x 25mm Write on area Marker size
R0175	19 x 150mm 40 marks per a reel
R0512	19 x 19mm Write on area Marker size
R0512	19 x 75mm 90 marks per a reel
R0514	19 x 12.5mm Write on area Marker size
R0514	19 x 47mm 150 marks per reel
R0514	19 x 8mm Write on area Marker size
R0514	19 x 32mm 200 marks per reel

**HellermannTyton - Argentina**  
Monteagudo 760  
(1672) Villa Lynch  
Province of Buenos Aires  
Argentina  
Tel: +541 14754 5400  
Fax: +541 14752 0374

**HellermannTyton - Australia**  
HT Australia  
Units 2 & 3,  
12-14 Mangrove Lane  
Taren Point  
New South Wales 2229  
Australia  
Tel: +61 295 252133  
Fax: +61 295 262495

**HellermannTyton - Austria**  
HellermannTyton GmbH  
Obachgasse 6  
A-1221 Vienna  
Austria  
Tel: +43 1 259 99 55  
Fax: +43 1 259 99 11

**HellermannTyton - Brazil**  
HellermannTyton Ltda  
Av. José Benassi, 100  
Parque Industrial  
Jundiaí - SP  
Brazil  
CEP 13213-085  
Tel: +5511 4815 9040  
Fax: +5511 4815 9029

**HellermannTyton - Canada**  
Beaver Creek Business Park  
160 West Beaver Creek  
Unit 1, Richmond Hill  
Ontario L4B 1B4  
Canada  
Tel: +1 905 882 8024  
Fax: +1 905 882 1624

**HellermannTyton - China**  
(Wuxi) Electrical Accessories Co. Ltd  
Suite 703, 7/F, Tower 1,  
Kerry Everbright City,  
No. 218, Tian Mu Xi,  
Shanghai  
China 200070  
Tel : + 8621 6317-4245  
Fax : +8621 6317-5273

**HellermannTyton - Czech Republic**  
HellermannTyton  
Litovská 28  
CZ-779 00 Olomouc  
Tel: +420 508 393231  
Fax: +420 508 393694

**HellermannTyton - Denmark**  
Baldersebuen 53  
2640 Hedehusene  
Denmark  
Tel: + 45 70 23 71 20  
Fax: +45 70 23 71 21

**HellermannTyton - Finland**  
Sahkotie 8  
Fin-01510 Vantaa  
Finland  
Tel: +358 9 8700 450  
Fax: +358 9 8700 4520

**HellermannTyton - France**  
Miniparc du Manet  
2 rue des Hetres  
BP 130, 78196 Trappes Cedex  
France  
Tel: +33 1 30 13 80 00  
Fax: +33 1 30 13 80 60

**HellermannTyton - Germany**  
Großer Moorweg 45  
25436 Tornesch  
Germany  
Tel: +49 4122 7011  
Fax: +49 4122 701400

**HellermannTyton - Hong Kong**  
Rooms 1802  
3, Olympia Plaza,  
No. 255 King's Road  
NorthPoint  
Hong Kong  
Tel: +852 2831 9090  
Fax: +852 2832 9381

**HellermannTyton - Hungary**  
HellermannTyton Kft.  
Kisfaludy u. 13, H-1047  
Budapest  
Hungary  
Tel: +36 1 369 41 51  
Fax: +36 1 369 41 51

**HellermannTyton - Ireland**  
Unit 77  
Cherry Orchard Industrial Estate  
Ballyfermot  
Dublin 10  
Ireland  
Tel: +353 1 626 8267  
Fax: +353 1 626 8022

**HellermannTyton - Italy**  
Via Praitole 9 Bis  
35010 Limena PD  
Padua  
Italy  
Tel: +39 049 767 870  
Fax: +39 049 767 985

**HellermannTyton - Japan**  
HellermannTyton  
9F Ebisu Prime Square Tower  
1-1-39 Hiroo  
Shibuyaku  
Tokyo 150-00-12  
Japan  
Tel: +813 5468 1771  
Fax: +813 5468 1772

**HellermannTyton - Mexico**  
Rio Conchos 1757  
Industrial El Rosario  
Guadalajara  
Jalisco  
Mexico  
44890  
Tel: +52 3 659 7020  
Fax: +52 3 659 6939

**HellermannTyton - Netherlands**  
HellermannTyton B.V.  
Vanadiumweg 11-c  
NL-3812 PX Amersfoort  
Netherlands  
Tel: + 31 (0) 33 460 06 90  
Fax: +31 (0) 33 460 0699

**HellermannTyton - Norway**  
Stromsveien 177  
PO Box 240 Alnabru  
N-0614 Oslo  
Norway  
Tel: +47 2 317 4700  
Fax: +47 2 297 0970

**HellermannTyton - Philippines**  
Unit 2107  
88 Corporate Center  
Sedeno cor Valero Street  
Salcedo Village  
Makati City  
Tel : (+632) 752 6551/2  
Fax : (+632) 752 6553

**HellermannTyton - Poland**  
HellermannTyton  
Oddzial w Polsce  
ul. Meissnera 9/28  
PL-03 982 Warszawa  
Poland  
Tel: +48 22 673 89 54  
Fax: +48 22 673 89 54

**HellermannTyton - Portugal**  
Rua Alberto Saavedra, 201 2° DF  
4465-286 S. Mamede de Infesta  
Portugal  
Tel: 00 351 229 06 45 39  
Fax: 00 351 229 06 45 40

**HellermannTyton - Romania**  
HellermannTyton  
Str. Stirbei Voda nr. 95  
Bl.25B,ET. 3, Ap. 10  
Sector 1, 77104  
Bucharest - Romania  
Tel: +40 21 310 4445  
Fax: +40 21 310 4445

**HellermannTyton - Singapore**  
545 Yishun Industrial Park A,  
Yishun Ave 7,  
Singapore 768741  
Tel: + 65 6852 8585  
Fax: +65 6756 6798

**HellermannTyton - Slovenia**  
HellermannTyton GmbH  
Prodrznica Ljubljana  
Trubarjeva 79  
SI-1101 Ljubljana  
Slovenia  
Tel: +386 1 4337056  
Fax: +386 1 4336321

**HellermannTyton - South Africa**  
HellermannTyton  
Private Bag X158  
Rivonia  
Johannesburg  
2128  
South Africa  
Tel: +27 11 879 6651  
Fax: +27 11 879 6605

**HellermannTyton - South Korea**  
HellermannTyton Pte Ltd  
Korea Office, Room 3321  
Madong, ChungAng Circulation  
Complex # 1258  
Kurobon-Dong  
Kuro-Ku  
Seoul 152-721 Korea  
Tel: + 82-2-2614-0157  
Fax:+ 82-2-2614-0284

**HellermannTyton - Spain**  
HellermannTyton España, S.L.  
C/ Jose Echegaray, 4  
P. Emp. Casablanca 1. Edif. Bl 2°  
28100 Alcobendas (Madrid)  
Spain  
Tel: 00 34 91 661 28 35  
Fax: 00 34 91 661 23 68

**HellermannTyton - Sweden**  
HellermannTyton AB  
Datavägen 5  
Box 569  
175 26 Järfälla  
Sweden  
Tel: +46 8 580 890 00  
Fax: +46 8 580 890 01

**HellermannTyton - Thailand**  
10th Floor Sitthivorakit Building  
5 Soi Pipat, Silom Road (Bangkok)  
Bangkok 10500  
Thailand  
Tel: +662 237 6702  
Fax: +662 266 8664

**HellermannTyton - USA**  
7930 North Faulkner Road  
PO Box 245017  
Milwaukee  
Wisconsin 53224  
United States  
Tel: +1 414 355 1130  
Fax: +1 414 355 7341

**HellermannTyton - UK**  
(Cable Accessories - Fixings)  
Sharston Green Business Park  
1 Robeson Way  
Altrincham Road  
Wythenshawe  
Manchester M22 4TY  
United Kingdom  
Tel: +44 161 945 4181  
Fax: +44 161 945 3708

**HellermannTyton UK**  
(Distribution to Electrical  
Wholesalers)  
Wharf Approach  
Aldridge  
Walsall  
West Midlands WS9 8BX  
United Kingdom  
Tel: +44 1922 458151  
Fax: +44 1922 743237



**HellermannTyton**  
A SPIRENT Company